



General Meeting Sponsorship Packet

University of North Texas

Section C082

2021 - 2022



Introduction



The Society of Women Engineers is “the world’s largest advocate and catalyst for change for women in engineering and technology”. This international organization works to advance more women in STEM (Science, Technology, Engineering and Math). The mission of SWE is “to stimulate women to achieve full potential in careers as engineers and leaders, expand the image of the engineering profession as a positive force in improving the quality of life, and demonstrate the value of diversity.” For over 60 years, the Society of Women Engineers has worked towards this mission by: developing high school programs that show engineering as a viable option for women, hosting national and international conferences that work to imbibe technical and professional skills for women to succeed in STEM, and starting up local sections in different cities and university campuses to ensure these resources are available to women all around.

At the University of North Texas, we are privileged to have a very vibrant SWE Section. With over 50 registered members, we aim to bridge the gender disparity in engineering by: providing women in STEM at UNT with the necessary tools to succeed in their engineering career path, working with other engineering organizations and with the college of engineering to foster an environment of inclusivity, and engaging in outreach activities to encourage younger students to consider a career in STEM. For more information about our section, please visit untswe.org

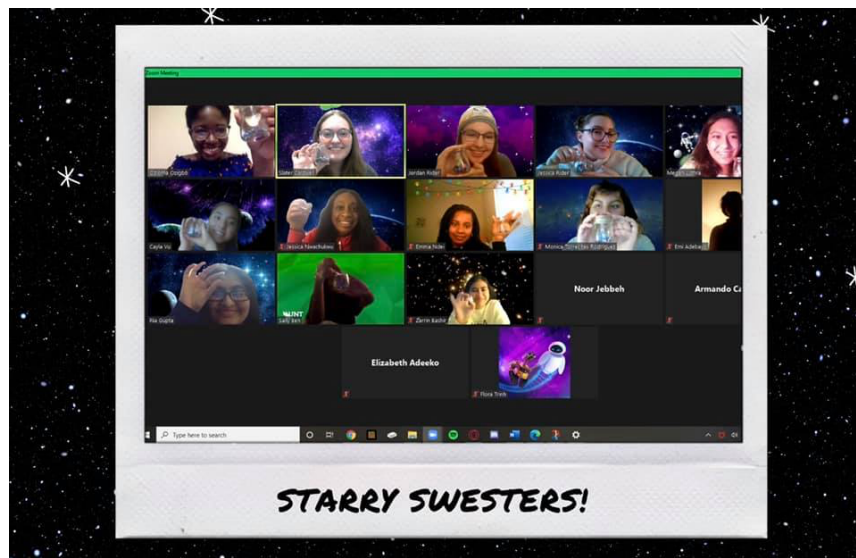
The Society of Women Engineers (SWE) at the University of North Texas (UNT) invites you to be involved with our collegiate section during the 2021-2022 academic year by sponsoring one of our general meetings and giving a talk at the meeting you sponsor. Our general meetings grant members and current UNT students the opportunity to commune, build lifelong relationships, network with representatives from companies, and learn! Our members look forward to our vivacious meetings because they leave with passion, insight, and a sense of belonging to a community. This in turn encourages our members to feel confident in their prospective roles in STEM.

Our partnership will help us continue this tradition and support the growth of our members. Our members are eager to meet representatives from your company and learn from them!

Our Section



Our SWE Section C082, is made of around 50 passionate members. Meetings are held biweekly throughout each long academic semester. During that time, speakers from companies have the opportunity to speak to our SWE members about their respective company or a topic of their choice.



Our Officers



SWE values diversity and inclusivity as exemplified by our officers . Our executive board is composed of officers and ambassadors. Meet our executive board for the 2021 to 2022 academic year below!

PRESIDENT
Ozioma Ozigbo



VICE PRESIDENT
Emma Ndei



SECRETARY
Ria Gupta



TREASURER
Megan Luthra

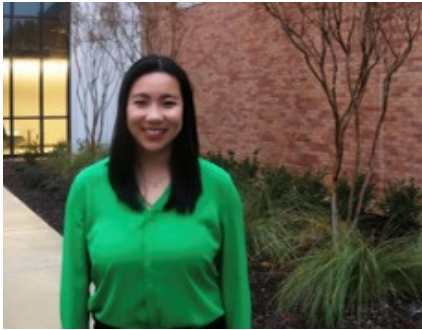


Our Officers



HEAD OF PUBLIC RELATIONS

Flora Trinh



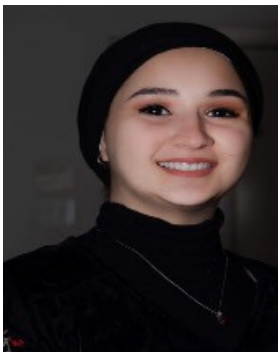
DIRECTOR OF NETWORKING

Jessica Nwachukwu



DIRECTOR OF OUTREACH

Noor Jebbeh



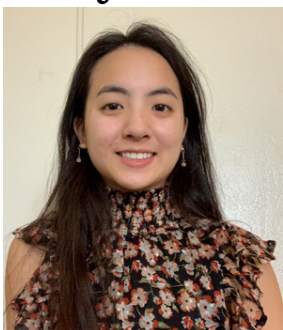
UNDERGRADUATE REPRESENTATIVE

Jordan Rider



ADVERTISING/DESIGN

Cayla Vu



Our Advisors



We have a faculty advisor on campus and a professional counselor from Dallas SWE. These advisors help us coordinate with UNT administration and SWE national to plan events and hold meetings.

FACULTY ADVISOR

Stephanie Ludi



PROFESSIONAL COUNSELOR

Michelle Rogers



General Meetings



Description:

General meetings are held biweekly throughout the academic semester at the University of North Texas Discovery Park. These meetings foster a tighter bond between SWE members and give members the opportunity to network with each other and professionals. Each meeting includes a meal and a company talk or workshop. Your company will be given the opportunity to host a workshop or give a talk and recruit potential candidates during the meeting.

Target Audience:

Up to 60 SWE members and UNT students from all years and disciplines.

Financial Contribution:

Part of our tradition is to provide a meal at every general meeting. We are hoping that your company will attend one general meeting and sponsor the meeting using one of the following options:

- Option 1: buy and deliver food to the address below (Domino's pizza, Chick-fil-A, etc.).
- Option 2: send a \$150 check to cover the cost of the meal. UNT SWE will buy and deliver the meal to the meeting.

Please use our address below to deliver any food:

University of North Texas Discovery
Park Attn: Society of Women Engineers
3940 N Elm St. Denton, TX 76207

General Meeting Dates:

- August 30
- September 13
- September 27
- October 11
- October 25
- November 8
- November 22

General Meetings



Your Benefits:

1. Exclusive access to all current UNT SWE members' resumes through google drive
2. Your company's information will be on our website and all meeting related marketing materials
3. A 60-minute presentation made by your corporate representative during the scheduled meeting
4. Lifetime relationship with UNT SWE
5. Brand exposure to all UNT SWE members
6. An exclusive recruiting opportunity during the meeting

Optional:

Your company can give out small prizes to solidify your company's brand, during the SWE ice breaker activity played at the beginning of our general meetings.

Contact Information



Thank you in advance for your interest! Your partnership is immeasurable and UNT SWE cannot wait to build a lifelong relationship with you!

Your contribution will greatly benefit both UNT SWE and your company through increased visibility and personal contact with some of the future's most innovative and passionate scientists, technologists, engineers and mathematicians. If you have any questions, or would like more information, please contact me via the email address or phone number below.

Sincerely,

Ozioma Ozigbo
UNT SWE President 2021-2022
untswe@gmail.com
(940) 205-0088